



**WILLARD 40
TRAWLER**



For the Man Who Wants to go Places...

Slip through the sparkling Bahamian waters, cruise Baja California, savor the cool green seas of Martha's Vineyard or the San Juans in the summer. Or, simply spend a quiet weekend in your favorite anchorage. With a range of 1800 miles at cruising speed or 3000 miles at a more relaxed pace—the Willard 40 leaves the choice to you.

There is much more to the Willard 40 than what is readily apparent. Invisible, but nonetheless very real is the heritage of 20 years of custom shipbuilding by Willard. The lineage of numerous recreational, commercial and military designs is reflected in the classic poise of her lines and her inherent seakindly grace under the pleasures of open sea.

In Luxurious Comfort

All the privacy and amenities of home—The expansive flying bridge provides dinghy storage and lounging space—a fore-and-aft double seat that snaps down into a double berth—for everything from sunbathing to moonlit cocktails.

Her accommodations below are regal: two large staterooms panelled and detailed in teak, a private head in the master stateroom and a guest head with its own full stall shower. The galley is completely and tastefully equipped, featuring a 'J' shaped, two-tiered counter enabling the captain and his mate to serve refreshments and prepare epicurean delights while conversing with their guests. A cozy, protected after-cockpit offers an ideal after-dinner view of

the sunset. In addition to the standard plush carpeting, the handsome teak and rattan interior, the vinyl covered bulkheads, the comfortable combination settee/double berth—Willard provides ample opportunity for further developing the decor to your personal taste.

The Willard 40 is a yacht with space so bountiful you can entertain 25 guests for cocktails, with appointments so aesthetic and functional that the boat herself will turn a simple cruise for six into a memory that they and you will treasure forever.

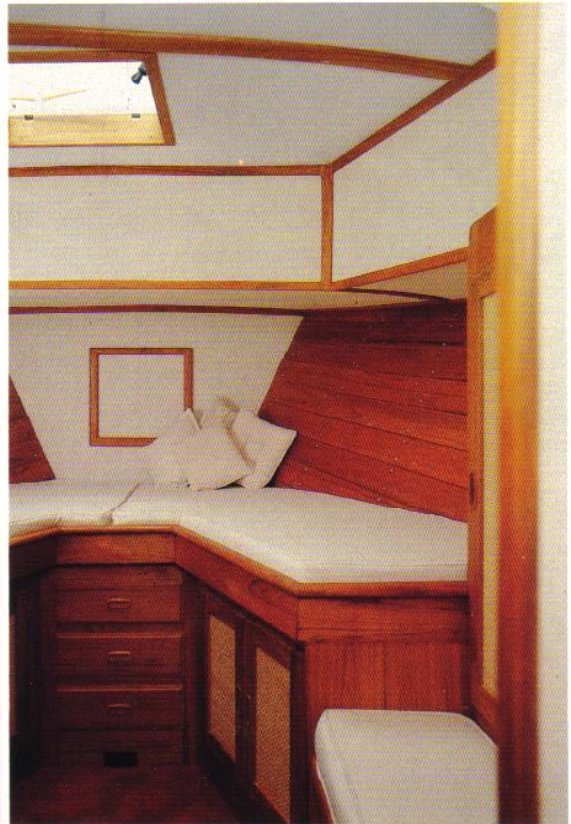
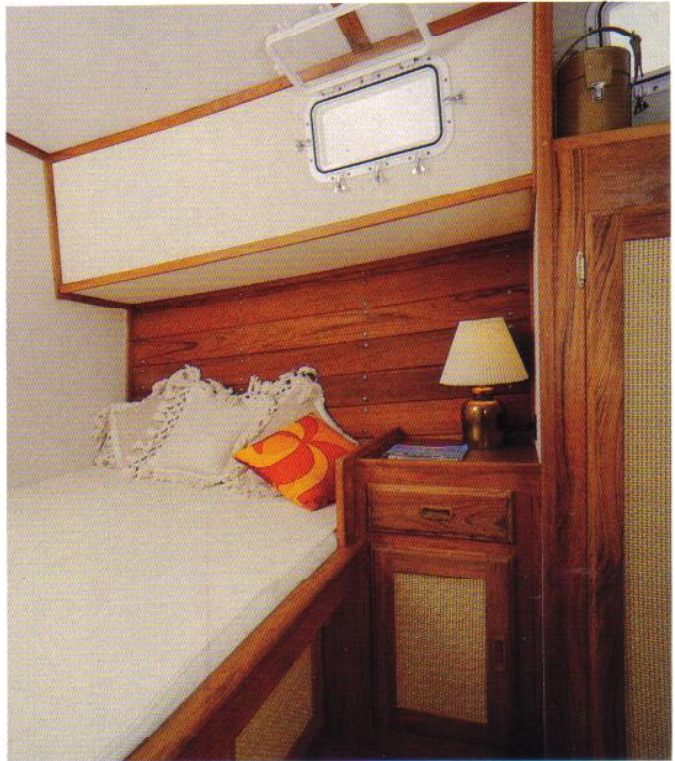
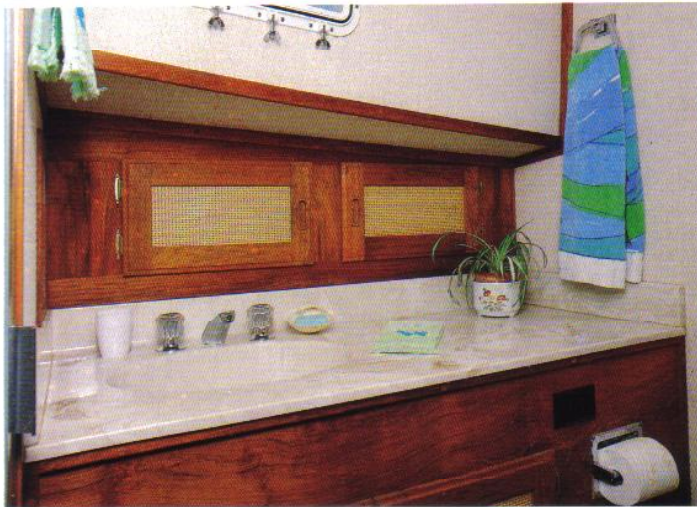
And Security

For all her luxury the Willard 40 is as comfortable offshore as she is docked at the marina. The foundation of the Willard 40 is her heavily constructed, double-ended, full displacement hull carrying 7,000 lbs. of ballast in a full length keel. Her hull design is so efficient that she burns only 2.5 gallons of diesel fuel per hour, and yet, thanks to her full displacement characteristics, she handles like a dream—especially in a following sea.

Her easily accessible engine room, the careful design of her support systems, the engineering focused upon safety, resulting in an assurance of absolute seaworthiness, allow the skipper and his mate to relax and enjoy their adventures. Her first smooth slice through a deep-sea roller will immediately prove to you the quality and soundness of the Willard 40. She is ready to go places, are you?

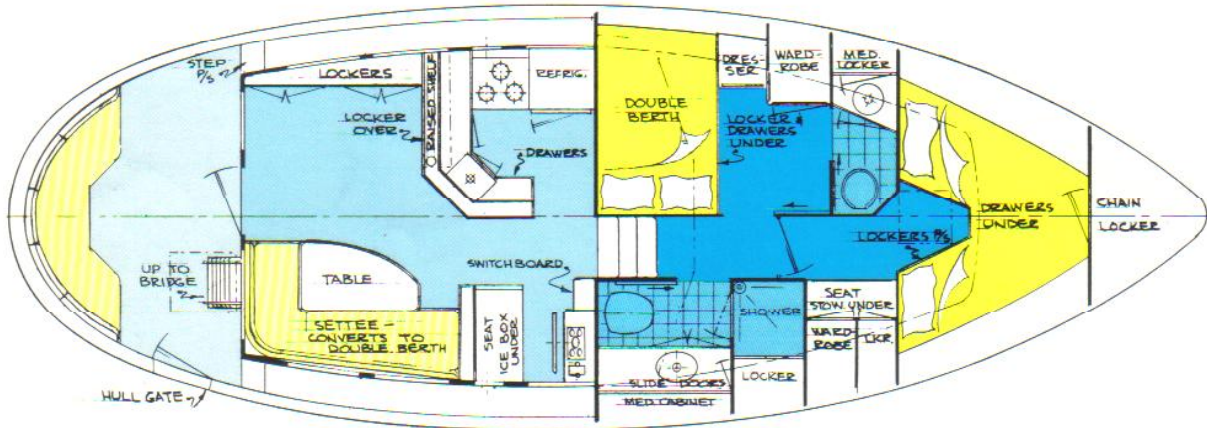
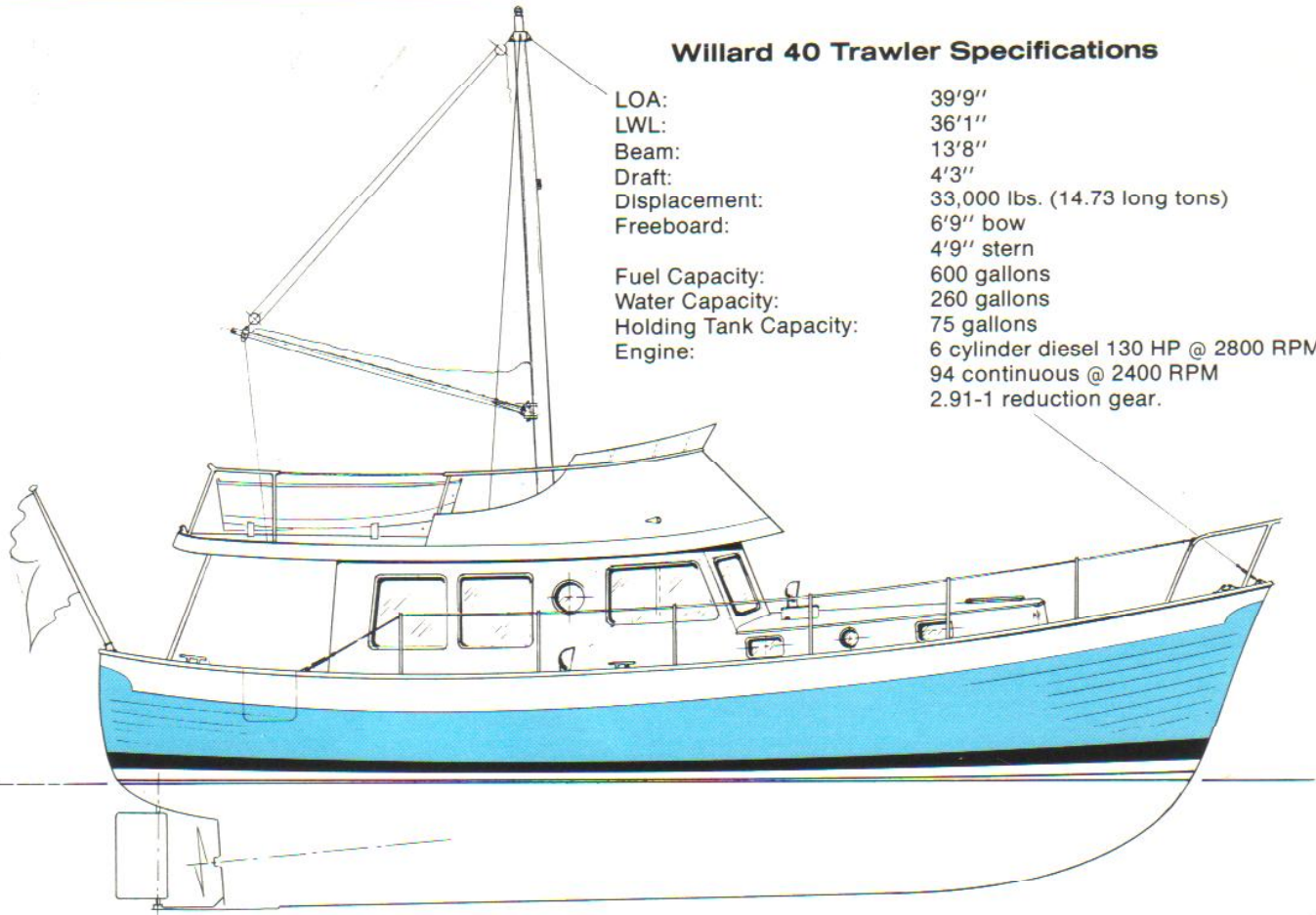


Counter clockwise from upper left to right: Unique drop down steps from the flybridge to forward deck; Starboard head with full stall shower; Well equipped galley; Forward stateroom; Captain's stateroom with a double bed and private head. *Opposite:* Spacious main salon.



Willard 40 Trawler Specifications

LOA:	39'9"
LWL:	36'1"
Beam:	13'8"
Draft:	4'3"
Displacement:	33,000 lbs. (14.73 long tons)
Freeboard:	6'9" bow 4'9" stern
Fuel Capacity:	600 gallons
Water Capacity:	260 gallons
Holding Tank Capacity:	75 gallons
Engine:	6 cylinder diesel 130 HP @ 2800 RPM 94 continuous @ 2400 RPM 2.91-1 reduction gear.

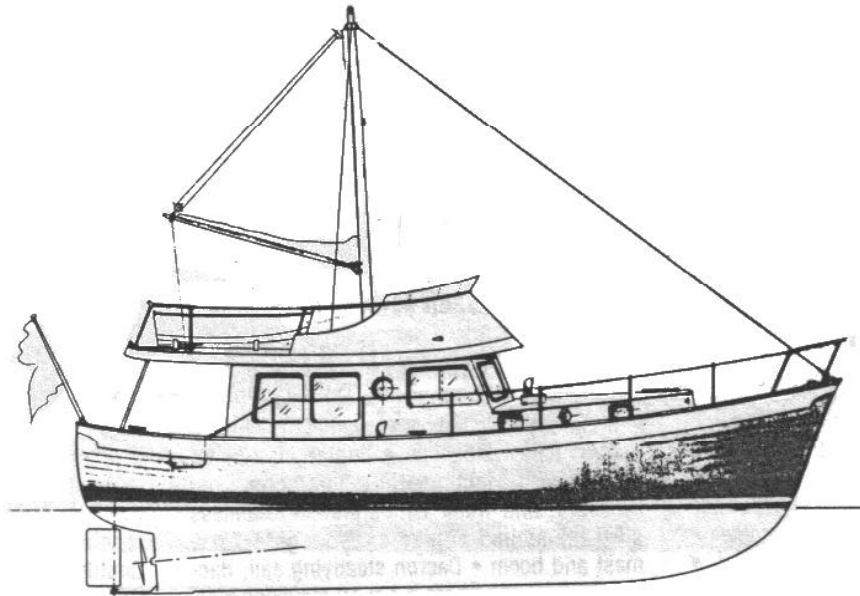


Propeller:	28" diameter
Shaft:	1 3/4" stainless steel (Sealoy)
Hull:	1/2" to 3/4" hand layup combination of mat and woven roving.
Clearance Height:	Mast up: 33'4" Mast down: 12'
Cockpit:	11'4" x 7'
Main Salon:	11' x 11'8"
Displacement/Length Ratio:	315
Prismatic Coefficient:	.56

Prices and specifications subject to change without notice.
Photos and copy may include optional equipment.

The Willard Co.

YACHT DIVISION/11200 Condor Ave./Fountain Valley, CA 92708/(714) 540-5211



WILLARD 40 TRAWLER

Base price as per standard specifications

\$140,000

Standard Colors:

Hull and deck — white, with light gray nonskid
boot top — dark blue

(Other Ferro colors are available on request and must be specified at the time of order).

Standard Interiors:

Earth tone interior (as featured in brochure photographs)
Blue interior

FACTORY INSTALLED OPTIONS

- | | |
|--|---------|
| A. Diesel Generator Package consisting of 10KW Perkins/Lima 3-phase generator including electric range & oven (in lieu of alcohol) | \$9,300 |
| B. Auxiliary Propulsion Package consisting of electric motor drive coupled to main shaft (requires option A) | \$2,700 |
| C. Electric Anchor Windlass Package consisting of anchor winch, 65 lb. Forfjord anchor, bow roller, 225' 5/16" chain, and foot switch (in lieu of standard anchor and rode) | \$2,800 |
| D. Second Flying Bridge Access consisting of fold down steps from flying bridge to forward deck | \$2,200 |

Prices and specifications subject to revision without notice. All prices, F.O.B. Factory, Fountain Valley, California



THE WILLARD COMPANY • 11200 CONDOR AVENUE • FOUNTAIN VALLEY, CA 92708 • (714) 540-5211